



THE TORONTO AND REGION CONSERVATION AUTHORITY

INDEX TO

WATERSHED MANAGEMENT ADVISORY BOARD MEETING #2/06

Friday, June 16, 2006

MINUTES	
Minutes of Meeting #2/06, held on April 21, 2006	25
CORRESPONDENCE	
Ashton, Brian, Councillor, City of Toronto re: Meadowcliffe Drive Erosion Project	25
MEADOWCLIFFE DRIVE EROSION CONTROL PROJECT	28
ATWOOD PLACE EROSION CONTROL PROJECT	33
REVISED BUDGET FOR THE DELIVERY AGREEMENT FOR THE ENVIRONMENTAL ASSESSMENT FOR THE NATURALIZATION AND FLOOD PROTECTION OF THE LOWER DON RIVER	35
ENVIRONMENTAL ASSESSMENT FOR THE DON MOUTH NATURALIZATION AND PORT LANDS FLOOD PROTECTION PROJECT Community Liaison Committee	37
MIMICO WATERFRONT LINEAR PARK PROJECT	42
BARTLEY SMITH GREENWAY Waterside Marsh Restoration Initiative	46
ROUGE WATERSHED TASK FORCE Extension of Term	47
FINAL REPORT ON STORM AND FLOODING August 19, 2005	48
DON WATERSHED REGENERATION COUNCIL Minutes of Meetings #9/05, held on October 20, 2005; #10/05 held on November 17, 2005; #1/06, held on January 19, 2006; #2/06, held on February 16, 2006; #3/06, held on March 16, 2006 and #4/06, held on April 20, 2006.	51

DUFFINS CARRUTHERS WATERSHED RESOURCE GROUP Minutes of Meeting #1/06, February 22, 2006	52
ETOBICOKE-MIMICO WATERSHEDS COALITION Minutes of Meeting #5/05, held on November 24, 2005.	53
HUMBER WATERSHED ALLIANCE Minutes #2/06 held on April 18, 2006	53
ROUGE PARK ALLIANCE Minutes of Meeting #2/06, held on February 22, 2006 and Minutes of Meeting #3/06, held on March 31, 2006	54
ROUGE WATERSHED TASK FORCE MINUTES Minutes of Meeting #5/05, held on September 15, 2005; #6/05, held on November 10, 2005; #1/06, held on January 11, 2006; #2/06, held on February 16, 2006; #3/06, held on March 23, 2006 and #4/06, held on April 12, 2006	54



THE TORONTO AND REGION CONSERVATION AUTHORITY

MEETING OF THE WATERSHED MANAGEMENT ADVISORY BOARD #2/06
June 16, 2006

The Watershed Management Advisory Board Meeting #2/06, was held in the South Theatre, Black Creek Pioneer Village, on Friday, June 16, 2006. The Vice Chair Nancy Stewart, called the meeting to order at 10:42 a.m..

PRESENT

Maria Augimeri	Member
Gay Cowbourne	Member
Frank Dale	Member
Elaine Moore	Member
Dick O'Brien	Chair, Authority
Nancy Stewart	Vice Chair

ABSENT

Shelley Petrie	Member
Dave Ryan	Chair

RES.#D12/06 - MINUTES

Moved by:	Gay Cowbourne
Seconded by:	Frank Dale

THAT the Minutes of Meeting #1/06, held on April 21, be approved.

CARRIED

CORRESPONDENCE

(a) A letter dated May 29, 2006 from Councillor Brian Ashton, City of Toronto, in regards to item 7.1 - Meadowcliffe Drive Erosion Control Project.

RES.#D13/06 - CORRESPONDENCE

Moved by:	Elaine Moore
Seconded by:	Gay Cowbourne

THAT above-noted correspondence (a) be received.

CARRIED

CORRESPONDENCE (A)



Councillor
Brian Ashton

COMMISSIONER

Toronto City Council
Ward 36
Scarborough Southwest

May 29, 2006.

Brian Denney, P.Eng.,
CAO,
Toronto and Region Conservation Authority,
5 Shoreham Drive,
Downsview, Ontario
M3N 1S4

Dear Mr. Denney

Re: Meadowcliffe Shoreline Sector

I have been working with the Meadowcliffe community, TRCA and City staff for several years on erosion concerns and related issues for this shoreline sector between Gates Gully and Bluffer's Park.

In 2001 TRCA commissioned Terraprobe to undertake a geotechnical review of slope stability and erosion for Meadowcliffe Drive which resulted in the City undertaking some drainage improvements and TRCA increasing its shoreline erosion monitoring.

With increasing slope erosion concerns from the residents over the last couple of years, TRCA had Terraprobe complete a further geotechnical study dated April 26, 2006. Through a briefing from Terraprobe and TRCA staff, it is my understanding that significant changes have occurred in slope crest recession especially in the east and central portions of the study area. With the 2005 information, the slope toe and the long-term stable slope crest were plotted indicating a significant change from the 2001 report. The consultant was also recommending completion of all drainage works in accordance with the 2002 study and design. I am following up with City staff to ensure all drainage works are implemented to minimize overland drainage impacts on slope crest erosion.

.... /2

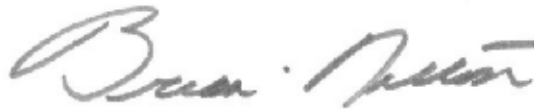
On May 3, 2006 I convened a community meeting for TRCA/Terraprobe to present the April, 2006 report findings and to obtain community comments. TRCA staff indicated that based on the new study they would be recommending to the Authority that the appropriate environmental assessment study be initiated to determine the appropriate shoreline management design to address public safety and natural heritage issues. I would suggest that the study area not only include the Meadowcliffe section but also the remaining shoreline over to Bluffers Park.

As Councillor for this area and on behalf of the Meadowcliffe community I strongly encourage the Watershed Management Advisory Board at its June 16th meeting, to approve moving forward with the environmental assessment work. This work will be critical in providing a solution before homes are at risk and allocating the capital monies in subsequent Toronto funded TRCA budgets. I offer to assist TRCA at the appropriate time on your capital shoreline erosion control budget submission and approval.

Upon approval by the Authority, I would recommend TRCA continue with its very successful "community working committee" approach (ie Sylvan Ave. project) for the environmental assessment and implementation phases.

I look forward to working with TRCA and participating on the community working committee for the Meadowcliffe project.

Yours truly,



Councillor Brian Ashton,
Scarborough Southwest – Ward 36.

BA/df

c.c. Larry Field, TRCA
Jim Berry, TRCA

SECTION I - ITEMS FOR AUTHORITY ACTION

RES.#D14/06 - MEADOWCLIFFE DRIVE EROSION CONTROL PROJECT
Initiation of the Class Environmental Assessment process for the Meadowcliffe Drive Erosion Control Project, Scarborough Bluffs, City of Toronto.

Moved by: Gay Cowbourne
Seconded by: Maria Augimeri

THE BOARD RECOMMENDS TO THE AUTHORITY THAT based on the recommendations in the April 2006 Terraprobe "Geotechnical Review of Slope Stability and Erosion " report and the 2005 ranking in our Erosion Priority List , the shoreline management options for the Meadowcliffe Drive Sector be expanded beyond the recommendations cited in the 1996 Integrated Shoreline Management Plan ;

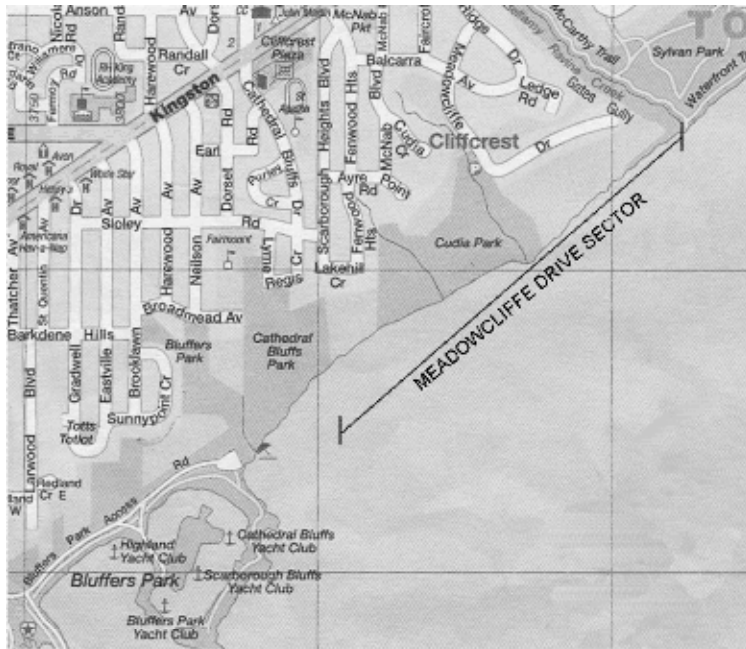
THAT staff be directed to commence a Class Environmental Assessment for the Meadowcliffe Drive Erosion Control Project , Scarborough Bluffs , City of Toronto , to review and evaluate a range of shoreline management options ;

AND FURTHER THAT Councillor Brian Ashton and Toronto Water and Parks , Forestry & Recreation be so advised .

CARRIED

BACKGROUND

The Meadowcliffe Drive Sector is located along the Scarborough Bluffs and comprises approximately 1,400 metres of shoreline extending from Gates Gully westerly to the East Beach at Bluffers Park. Roughly half of the tableland at this sector is dedicated greenspace at Cudia Park, located to the west of Meadowcliffe Drive and east of Lakehill Crescent. The remaining portion of tableland at Meadowcliffe Drive and Lakehill Crescent is privately owned with 21 residential properties that back onto the bluffs. The 600 metres of bluffs along Meadowcliffe Drive are approximately 57 metres high with an average inclination of about 1.2 : 1 (horizontal : vertical), with the shoreline in direct contact with the bluff toe. The slope face is generally bare of vegetation with some localized areas of sparse vegetation on the upper slope. Toronto and Region Conservation Authority (TRCA) staff have been monitoring erosion rates on Meadowcliffe Drive since 1985 at the request of several homeowners who have expressed concern over the loss of property and the potential long-term risk to their homes.



In 1996, TRCA prepared the Integrated Shoreline Management Plan (ISMP) to provide a more detailed understanding of the shoreline ecosystem within the boundaries of Tommy Thompson Park and Frenchman's Bay, and to provide the necessary framework for TRCA and local municipalities to establish priorities for future initiatives and for evaluating site-specific shoreline erosion works, protection of natural features, lakefilling, habitat protection and regeneration, private development and public recreation activities. The ISMP states that the shoreline of Reach 38, Meadowcliffe Drive, should remain in a natural state because it represents one of the few unprotected and natural shores of the Scarborough Bluffs.

In 2001, following a period of accelerated erosion, TRCA commissioned Terraprobe Limited to carry out a geotechnical review of slope stability and erosion along the Lake Ontario shoreline immediately south of Meadowcliffe Drive. This study included a review of historical air photos, soil and groundwater conditions, erosion processes and rates, detailed slope stability analysis, coastal engineering review and recommended erosion protection.

In their final report dated November 27, 2001, Terraprobe provided calculations of slope crest erosion rates between 1991 and 2001 and determined that localized crest loss ranged from 6 to 12 metres at the west part of the study area, to about 2 to 3.5 metres at the east part of the study area. Noting that the erosion was primarily the result of toe erosion by wave action and surface run-off flowing over the slope crest, the following recommendations were made:

- A significant upgrade of the stormwater collection system along the Meadowcliffe Drive right-of-way.
- Connection of existing roof eavestroughs to the street sewer.
- Construction of small earth berms along the slope crest.
- Placing boulders near the shore on an experimental basis, as recommended in the 1996 Integrated Shoreline Management Plan.
- Planting/seeding along the gullies and on bare slope areas.

Recommended further studies included:

- Continued monitoring of the slope crest on an annual or bi-annual basis.
- A stormwater management assessment of the area to determine the quantities of surface run-off over the slope crest.

Following the release of the 2001 Terraprobe report, staff continued to monitor the slope crest on an annual basis and the City of Toronto commissioned the firm of Winter Burnside to carry out a storm drainage study for the Meadowcliffe Drive area. The release of the Winter Burnside report in November 2002 resulted in several upgrades being carried out by the City of Toronto in 2004. It is understood that these improvements included depression storage, enhanced ditches and storm sewers, and a landscaping component.

In the spring of 2005, slides occurred along several sections of the Scarborough Bluffs, including Meadowcliffe Drive. Numerous homeowners expressed concern to Councillor Ashton's office over the extent of property lost in a single year. In response to the residents' concerns, TRCA commissioned Terraprobe Limited in 2005 to re-assess the site and slope conditions and compare these findings with their 2001 report, and to provide recommendations on slope and erosion stabilization works.

As part of this study, detailed measurements of the slope crest position were taken relative to existing structures and features at each of the 12 residential properties. Based on Terraprobe's measurements, slope crest recession rates ranged from 0.04 to 2.14 metres per year between 2000 and 2005. Toe erosion rates were inferred through a comparison of the shoreline positions available on maps of air photos from 1980, 1991, 2002 and 2005, indicating that the toe receded at an average rate of about 1.1 to 1.3 metres per year between 1980 and 2005. As a general trend, localized deepening in the lake bed topography was also noted in the order of 0.2 to 0.3 metres and may be attributed to ongoing erosion and recession of the toe. It was also noted that the potential for waves to uprush and erode the slope toe increases with the deepening of the lake bed.

Based on the 2005 slope stability analysis results, the long-term stable slope crest (LTSSC) is predicted to be projected inland by a further 48 metres on average from the 2005 slope crest. This LTSSC was determined under the assumption that wave erosion at the slope toe had been mitigated, however it must be noted that wave erosion is currently still an active force at the slope toe and that the LTSSC will continue to move further inland if the toe continues to recede.

The final report, dated April 26, 2006 illustrates the long term risk to the Meadowcliffe properties by providing a minimum distance from each property to the LTSSC, which clearly indicates that three houses are within the LTSSC and two others are less than 10 metres from the LTSSC. Two additional houses are within 15 metres of the LTSSC; one house is within 25 metres; and the remaining four houses are within 44 to 69 metres. Also within the LTSSC is the easternmost portion of Meadowcliffe Drive and the associated storm water collection drains. Based on the significant recession of the slope toe and respective recession of the LTSSC, Terraprobe strongly recommends that shoreline protection works be implemented in addition to implementing the remaining stormwater drainage improvements recommended in the 2002 Winter Burnside report.

In May 2006, staff attended a public meeting hosted by Councillor Ashton's office for the Meadowcliffe Drive residents. The purpose of the meeting was to present the findings in Terraprobe's 2005 report and to give the property owners an opportunity to voice their concerns in an open forum. At the meeting the public requested that action be taken to provide long-term protection for the shoreline, and TRCA has since received a letter from Councillor Ashton's office in support of this initiative.

RATIONALE

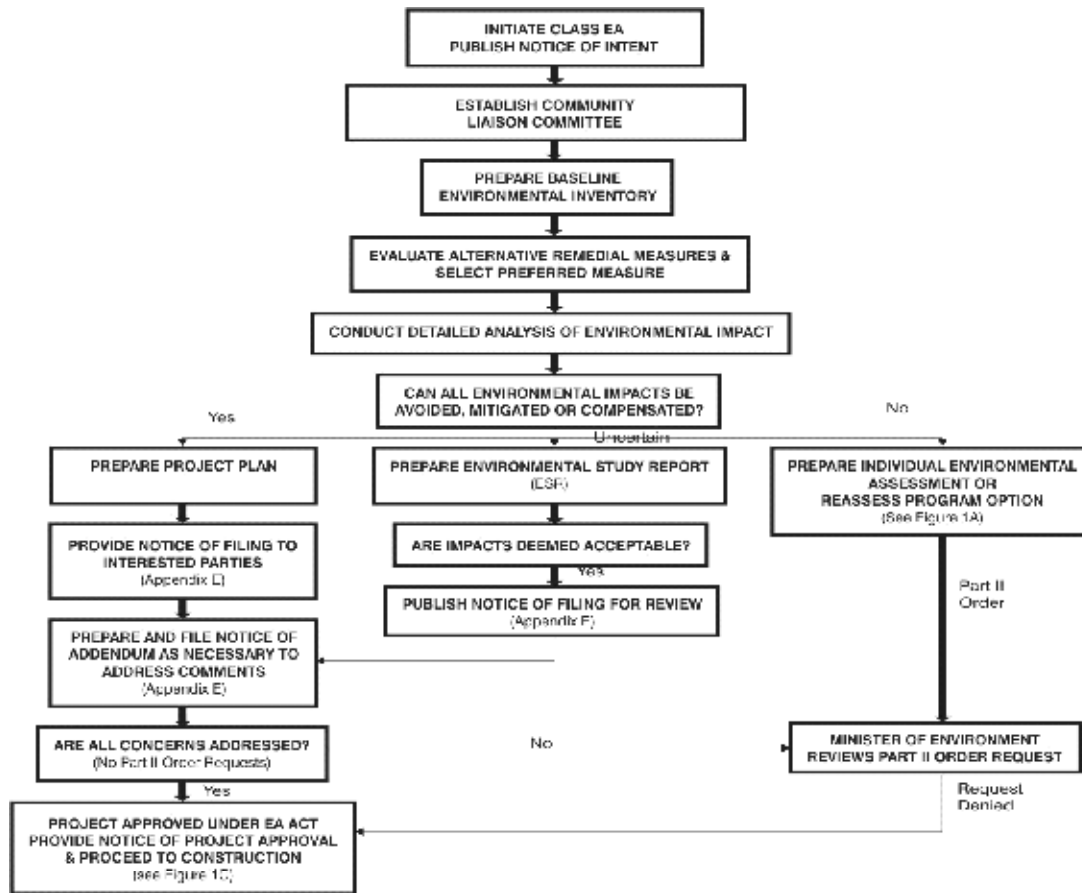
Based on the significant change in recession rates the high ranking on our 2005 Erosion Priority List and the support of Councillor Brian Ashton/Meadowcliffe Community for immediate action, staff recommend that we investigate a broader range of shoreline management alternatives than described in the ISMP, and that we evaluate these options through the *Class Environmental Assessment for Remedial Flood and Erosion Control Projects (2002)*; the prescribed process for projects of this type.

DETAILS OF WORK TO BE DONE

Staff recommend that the study area be expanded beyond Meadowcliffe Drive to include the area from Bluffers Park east to Gates Gully to gain a thorough understanding of the coastal processes affecting the site and the shoreline sector east of Bluffers Park, and to ensure that the alternative options developed address natural heritage, public access and public safety issues along the shoreline.

The planning and design phases of this project will be carried out under the *Class Environmental Assessment for Remedial Flood and Erosion Control Project (2002)*. The Class Environmental Assessment (Class EA) approach is considered a suitable means for the planning of remedial flood and erosion control projects because it provides a consistent, streamlined process that ensures compliance with Environmental Assessment Act (EAA) requirements.

The planning and design process of a Class EA project is illustrated in as follows:



As indicated in Step 2, a Community Liaison Committee (CLC) will be established as part of the Class EA process. Staff are committed to working with the Councillor's office in the formation of the CLC, and will request representation from the City of Toronto and local community groups to ensure that all views and concerns are taken into consideration during the development and evaluation of alternative options.

The Class EA process includes retaining geotechnical and coastal engineering consultants to assist staff in the development of alternative options and in the detailed design of the preferred alternative.

FINANCIAL DETAILS

It is anticipated that the study, design and approvals for this project will cost approximately \$120,000 over two years. Funding is available from the City of Toronto in TRCA's Valley and Erosion Control budget under account code 145-01.

Report prepared by: Moranne Burnet, 416-392-9690
 For Information contact: Moranne Burnet, 416-392-9690
 Date: May 29, 2006

RES.#D15/06 -

ATWOOD PLACE EROSION CONTROL PROJECT

Initiation of the Class Environmental Assessment process for the Atwood Place Erosion Control Project, 4-8 Atwood Place, Humber River watershed, City of Toronto.

Moved by: Gay Cowbourne
Seconded by: Maria Augimeri

THE BOARD RECOMMENDS TO THE AUTHORITY THAT staff be directed to commence a Class Environmental Assessment for the Atwood Place Erosion Control Project , 4-8 Atwood Place, City of Toronto.

CARRIED

BACKGROUND

Atwood Place is a residential cul-de-sac bordering on the Humber Parklands near Islington Avenue and Finch Avenue West in the City of Toronto. Three residential dwellings at Nos. 4, 6 and 8 Atwood Place have rear yards that back onto the coincident slope in the park. Situated between the rear yards of these properties and the top of bank, is a heavily used footpath which connects from the right-of-way on Atwood Place to a formal pedestrian path located approximately 100 metres downstream.

A review of staff files indicate that riverbank erosion has been occurring along this outside meander of the Humber River since as early as 1978, when the Toronto and Region Conservation Authority (TRCA) first added Atwood Place to the list for annual erosion monitoring at the request of a local homeowner. While monitoring records to date demonstrate that there is no imminent risk to the houses, ongoing erosion has threatened the heavily used footpath since at least 1998.

Correspondence with the City of Toronto Parks department in 1998 indicates that the footpath, although not maintained by Parks, is recognized as a well-traveled trail despite the potential hazards. To address these concerns, TRCA agreed to carry out interim measures solely to protect the footpath until a more permanent solution could be implemented. These measures, completed in 1998, included minor bank re-grading, jute logs placed at the toe of slope, and a post and cable fence installed at the top of bank. As of staff's last inspection in November 2005, the jute logs have disappeared, the slope is oversteepened, sections of the fence are missing and/or failing, and the footpath has been reduced to less than 0.5 metres in width at several sections. A large erosion scar has also formed downstream of the slope in the floodplain, creating a risk to the pedestrian bridge.

A site meeting was held between TRCA and Parks department staff on November 25, 2005 to discuss an appropriate course of action to protect public safety. The option of preventing access by installing barriers and heavily vegetating the area was considered, however the Parks department reiterated the concern that people will continue to use the footpath despite these efforts. TRCA staff also expressed the desire to provide long-term protection for the houses at Nos. 4, 6 and 8 Atwood, which are anticipated to be at risk in the next 15-20 years if no remedial works are undertaken. A consensus was reached at this meeting that the preferred option is to provide formal protection for the pathway and downstream pedestrian bridge, thereby providing long-term protection for the houses on Atwood Drive.

RATIONALE

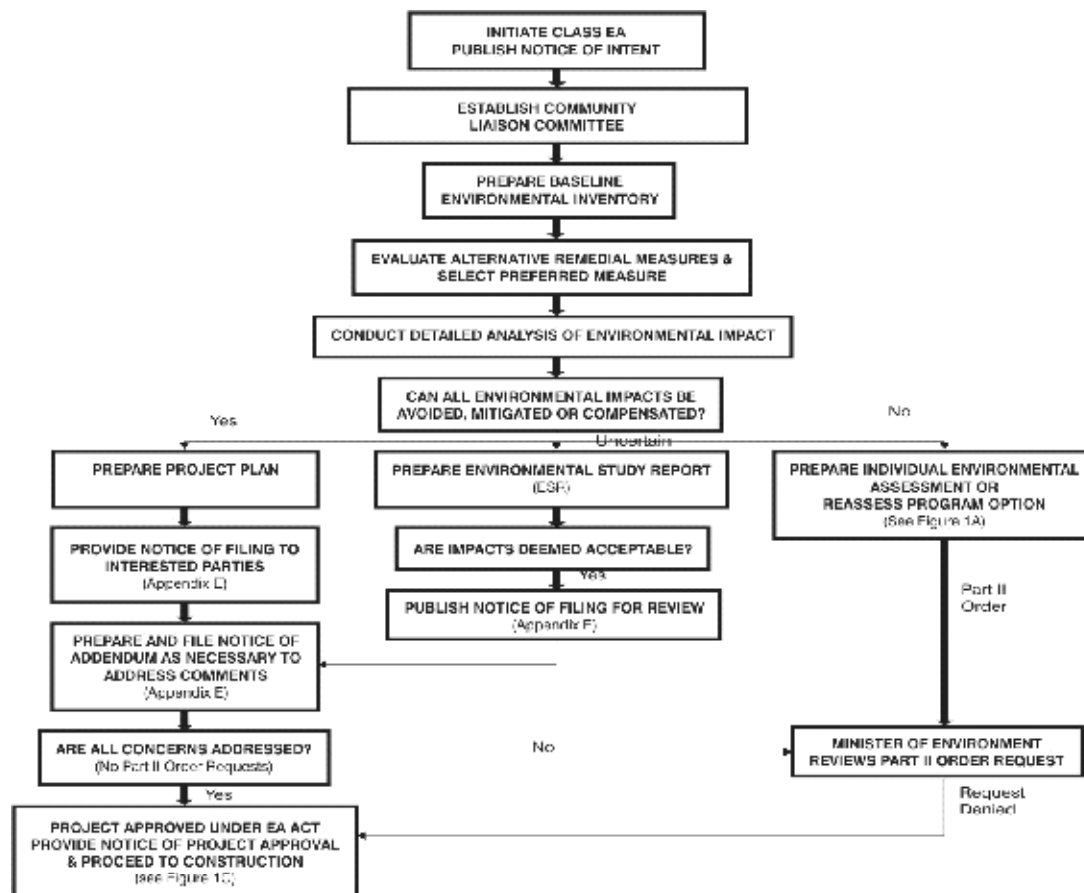
This site has ranked 6th, on average, on TRCA's Erosion Priority List since 1999 and therefore has not ranked high enough to be considered for remedial works under our Erosion Monitoring and Maintenance Program. However, because the issue is one of public safety with respect to the footpath and pedestrian bridge, this project is eligible under the Parks Priority Program, whereby the City of Toronto annually identifies a list of priority sites on TRCA property which require remedial or maintenance works.

Recognizing that this project presents an opportunity to meet the City of Toronto's objective of protecting the footpath and pedestrian bridge, and TRCA's objective of providing long-term protection of private property, staff request that the Class Environmental Assessment process be initiated to determine a preferred remedial measure of erosion control.

DETAILS OF WORK TO BE DONE

The planning and design phases of this project will be carried out under the *Class Environmental Assessment for Remedial Flood and Erosion Control Project (2002)*. The Class Environmental Assessment (Class EA) approach is considered a suitable means for the planning of remedial flood and erosion control projects because it provides a consistent, streamlined process that ensures compliance with Environmental Assessment Act (EAA) requirements.

The planning and design process of a Class EA project is illustrated below:



The Class EA process includes retaining geotechnical engineering and geomorphology consultants to assist staff in the development of alternative options and in the detailed design of the preferred alternative.

FINANCIAL DETAILS

It is anticipated that the study, design and approvals for this project will cost approximately \$50,000 over one year. Funding is available from the City of Toronto in TRCA's Valley and Erosion Control budget under account code 155-01.

Report prepared by: Moranne Burnet, 416-392-9690
For Information contact: Moranne Burnet, 416-392-9690
Date: May 26, 2006

RES.#D16/06 - REVISED BUDGET FOR THE DELIVERY AGREEMENT FOR THE ENVIRONMENTAL ASSESSMENT FOR THE NATURALIZATION AND FLOOD PROTECTION OF THE LOWER DON RIVER
Funding increase to undertake the Don Mouth Naturalization and Port Lands Flood Protection Project Environmental Assessment.

Moved by: Gay Cowbourne
Seconded by: Maria Augimeri

WHEREAS the Toronto and Region Conservation Authority (TRCA) has been identified as the recipient agency to undertake the naturalization and flood protection of the mouth of the Don ;

WHEREAS the Toronto Waterfront Revitalization Corporation (TWRC) and TRCA signed a delivery agreement in December 2002 for the sum of \$2 million dollars for the delivery of two projects: the Lower Don River West Remedial Flood Protection Project (LDRW) and the Don Mouth Naturalization and Port Lands Flood Protection Project (DMNP);

WHEREAS the Delivery Agreement was subsequently increased to \$3 million in late summer 2004 in recognition of the requirement to undertake two separate environmental assessments , increased administration costs , additional design requirements and the complexity of the issues;

WHEREAS TRCA and TWRC have recommended to the three levels of government that the Delivery Agreement be increased by a further \$1,018,460.00 (excluding TWRC project management costs) in recognition of an expanded scope of work and study area , added complexity related to new waterfront issues and an increased contingency to address uncertainty related to other possible issues , such as the World's Fair Bid;

WHEREAS TRCA has nearly completed the Stage One Project activities with the submission of the DMNP Project Environmental Assessment (EA) Terms of Reference to the Ministry of Environment on May 5, 2006;

THEREFORE LET IT BE RESOLVED THAT THE BOARD RECOMMENDS TO THE AUTHORITY THAT TRCA enter into an amended Eligible Recipient Agreement with TWRC providing an additional \$1,018,460.00 (excluding any additional costs for TWRC) for the second stage of the DMNP Project;

THAT following authorization by TWRC , the contract for the consultant team led by Gartner Lee Limited be increased from \$1,182,100.00 to \$1,706,716.39 plus \$256,007.46 for contingencies;

AND FURTHER THAT staff be authorized and directed to take all necessary actions to implement the foregoing , including the signing of any documents .

CARRIED

BACKGROUND

On December 17, 2002, a \$2 million Delivery Agreement for the Naturalization and Flood Protection for the Lower Don River was signed between the TWRC and TRCA. This Delivery Agreement called for two separate environmental assessments to be conducted at the mouth of the Don River: the Lower Don River West Remedial Flood Protection Project, which has been completed and has proceeded to construction, and the Don Mouth Naturalization and Port Lands Flood Protection Project. The DMNP Project will require detailed land-use planning through an individual environmental assessment to devise the best solution to re-establish a natural, functioning wetland at the mouth of the Don River, while providing flood protection to approximately 230 hectares of land south and east of the existing Keating Channel.

In October 2003, the TWRC and TRCA approached the three levels of government to approve a \$1 million increase in funding for the two projects under this Delivery Agreement due to the recognition of the requirement to undertake two separate environmental assessments, the increased administration costs and the additional design requirements involved. This increase in funding was approved by the TWRC in September 2004. Gartner Lee Limited (GLL) was awarded the contract to undertake the EA for the DMNP Project at an upset cost of \$1,149,400.00 as per Authority Resolution #A37/04, February 27, 2004. GLL was later assigned the hydraulic modelling component of the project bringing the upset cost of their award to \$1,182,100.00 as per Sole Source RFQ #1/05 authorization.

Stage 1 of this Individual EA is to undertake an EA Terms of Reference (EA ToR). The EA ToR outlines the project background, range of alternatives, criteria to be used in evaluating alternatives and public consultation to be used during the actual EA (Stage 2). A comprehensive public consultation process was also utilized to develop the EA ToR.

Early in the development of the EA ToR, it was apparent that given the extensive infrastructure constraints surrounding the mouth of the Don, that the original proposed alignment for the naturalized mouth of the Don, directly into the Inner Harbour, may not provide sufficient opportunities to achieve the desired goals: to provide for a naturalized mouth of the Don and to remove the risk of flooding to lands surrounding the Don. TRCA received approval from TWRC to increase our study area to examine a 300 metre wide swath of land from the Don Roadway westward that extended southward to the Ship Channel and encompassed the entire proposed Don Greenway.

Furthermore, the complexity in land use planning in the surrounding areas (such as the Port Lands Implementation Strategy, Film Port Studios, Worlds Exposition Bid, etc.) have greatly increased since 2003 when the original Request for Proposals was released, resulting in much more complexity to be considered during the EA process.

Recognizing this expanded scope of work and complexity, TWRC has approved TRCA's request in February 2006 for an additional \$1,018,460.00 (including a 15% contingency) to undertake the EA for the DMNP Project, which will result in an approved budget for the Delivery Agreement of \$4,018,460.00. This increase will include a new approved budget for GLL of \$1,706,716.39 plus \$256,007.46 in contingencies.

TWRC is awaiting approval from the levels of government to officially revise the Contribution Agreement and Delivery Agreement for this project. Until such time, TRCA will finalize all Stage 1 activities (EA ToR) through the Ministry of Environment, as per Authority Resolution #A302/05, January 25, 2006, and will, upon approval of the EA ToR, proceed with all Stage 2 activities for the DMNP EA to an upset limit of the currently approved \$3.0 million budget under the current Delivery Agreement.

Report prepared by: Ken Dion, extension 5230
For Information contact: Ken Dion, extension 5230
Date: May 26, 2006

**RES.#D17/06 - ENVIRONMENTAL ASSESSMENT FOR THE DON MOUTH
NATURALIZATION AND PORT LANDS FLOOD PROTECTION PROJECT**
Community Liaison Committee. Update on the Don Mouth Naturalization
and Port Lands Flood Protection Project Terms of Reference and
Community Liaison Committee Membership.

Moved by: Gay Cowbourne
Seconded by: Maria Augimeri

THE BOARD RECOMMENDS TO THE AUTHORITY THAT the updated membership of the Community Liaison Committee (CLC) for the second stage of the Environmental Assessment for the Don Mouth Naturalization and Port Lands Flood Protection Project , be approved.

CARRIED

BACKGROUND

The Don Mouth Naturalization and Port Lands Flood Protection (DMNP) Project will transform the existing mouth of the Don River into a sustainable and functional naturalized river mouth, while removing the risk of flooding to 230 hectares of land east and south of the river.

The DMNP is being conducted as an Individual Environmental Assessment (EA). A Terms of Reference (ToR) is required as the first stage of a two stage *Environmental Assessment Act (EAA)* approval process in the Province of Ontario. The ToR for the DMNP was submitted to the Minister of Environment on May 5, 2006. The public comment period ended on June 5, 2006. Comments are now being addressed so that the Minister can approve the ToR and the project proceed to the next stage.

On February 28, 2005, a Technical Advisory Committee (TAC) meeting was held to initiate the DMNP Project EA. It was recommended at the TAC meeting that a CLC be established as part of the DMNP Project EA. The Individual Environmental Assessment process does not require the establishment of such a committee. However, given the benefits derived from the CLC for earlier projects and that the establishment of a CLC is consistent with Toronto Waterfront Revitalization Corporation (TWRC) practice, it was deemed that a CLC for the DMNP Project would provide similar results with regards to public consultation.

Toronto and Region Conservation Authority (TRCA) has long been involved with issues within the Don River watershed, particularly along the Lower Don River. During this period of involvement, TRCA has established relationships with many of the key community associations, and interest groups within the study area. TRCA invited representatives from these interest groups to participate on the CLC.

At Authority Meeting #3/05, held on April 29, 2005, Resolution #A89/05 was approved as follows:

THAT a Community Liaison Committee (CLC) be established to assist the Toronto and Region Conservation Authority (TRCA) and consultants in maintaining contact with community residents, groups, associations and organizations;

THAT the CLC provide community input into the project and in particular to the design of the public consultation process;

THAT staff be directed to work with the Technical Advisory Committee to identify community members for the CLC and in particular with the citizen members, Cynthia Wilkey and John Wilson;

THAT the Terms of Reference including the interim membership be approved;

AND FURTHER THAT staff report back to the Authority for formal endorsement of the membership of the CLC by June 2005.

The CLC met on four occasions during the ToR stage of the DMNP Project EA (May 19, 2005, July 13, 2005, October 17, 2005 and December 13, 2005). Members offered advice and the CLC acted as a sounding board for the information being presented at public meetings following the CLC meetings.

Several organizations identified in the previous Terms of Reference for the CLC did not appoint representatives during the ToR stage of the DMNP Project. Further, CLC members suggested additional groups not listed in the previous CLC Terms of Reference and these groups were invited to join the CLC and appointed representatives.

Upon approval by the Minister of Environment of the Terms of Reference for the DMNP Project, it will enter the second stage of the EA process. This approval is anticipated in July 2006. Prior to beginning the next public consultation for the EA phase of the project, TRCA staff will contact the organizations listed in the attached CLC Terms of Reference to confirm their continued membership on the CLC and to appoint a representative to the CLC during the second stage of the project.

The CLC Terms of Reference for the DMNP outlined in Attachment 1 has been updated and includes a list of the organizations that had appointed members to the CLC during the ToR stage of the DMNP.

Staff will report back to the Watershed Management Advisory Board with updates as needed.

Report prepared by: Michelle Vanderwel, extension 5280
For Information contact: Michelle Vanderwel, extension 5280
Date: May 24, 2006
Attachments: 1

Attachment 1

TERMS OF REFERENCE DON MOUTH NATURALIZATION AND PORT LANDS FLOOD PROTECTION PROJECT COMMUNITY LIAISON COMMITTEE (CLC) MEMBERSHIP FOR STAGE TWO OF THE INDIVIDUAL EA JUNE 7, 2006

The Don Mouth Naturalization and Port Lands Flood Protection Project (DMNP Project) will transform the existing mouth of the Don River into a sustainable and functional naturalized river mouth, while removing the risk of flooding to 230 hectares of land east and south of the river.

The DMNP Project is being conducted as an Individual Environmental Assessment. A CLC has been established for the first stage of the EA, the Terms of Reference stage. The continuation of these organizations as CLC members will be confirmed for the second stage of the EA.

FUNCTIONS OF THE CLC

- provide input in defining the project objectives, range of alternatives and alternative methods, and evaluation criteria as part of the Environmental Assessment Terms of Reference process;
- identify items of public concern and interest with regard to the impact and design of the proposed alternatives;
- provide direct input on the proposed alternatives to the conservation authority throughout the planning and design process;
- assist in the design of the public consultation framework;
- attend and assist at public meetings organized by Toronto and Region Conservation Authority (TRCA) to facilitate the resolution of concerns relating to the proposed project; and
- disseminate information.

The following groups will be requested to appoint a representative during the second stage of the EA process for the DMNP.

- Citizens for the Old Town
- Corktown Residents and Business Association
- Don Watershed Regeneration Council
- Gooderham & Worts Neighbourhood Association
- Mississaugas of the New Credit
- Parkdale Waterfront Group
- Port Lands Partnership
- Port Lands Action Committee
- Riverside Area Residents Association
- St. Lawrence Neighbourhood Association
- Southeast Downtown Economic Redevelopment Initiative
- Task Force to Bring Back the Don
- Toronto Bay Initiative
- Toronto Cycling Committee
- Toronto Métis Council
- West Donlands Committee
- Woodgreen Community Services

In addition, the City Councillor, MP and MPP for each of the following wards or ridings will be requested to participate in the CLC process during the second stage of the EA.

- Councillor, Ward 28
- Councillor, Ward 30
- MPP, Broadview-Greenwood
- MPP, Toronto Centre-Rosedale
- MP, Broadview-Greenwood
- MP, Toronto Centre-Rosedale

MEETINGS

During the EA stage of the DMNP, approximately five CLC meetings are anticipated to be held, during key decision-making points in the DMNP EA, and prior to public meetings. These meetings are currently anticipated to begin in September 2006 and will be held as required. Appointed CLC members will be reimbursed for travel costs for each CLC meeting, based on the cost of TTC tokens or mileage (at TRCA rates).

RES.#D18/06 -

MIMICO WATERFRONT LINEAR PARK PROJECT

Provide a status report for the Mimico Waterfront Linear Park project, and obtain authorization to proceed with Phase 1 implementation based on the current Delivery Agreement with the Toronto Waterfront Revitalization Corporation.

Moved by: Gay Cowbourne
Seconded by: Maria Augimeri

THE BOARD RECOMMENDS TO THE AUTHORITY THAT staff be directed to initiate Phase 1 of the Mimico Waterfront Linear Park project on July 3, 2006 based on the conditions and budget in the Delivery Agreement dated November 2003;

THAT the Toronto Waterfront Revitalization Corporation (TWRC) be requested to execute the necessary funding agreements in a timely fashion to ensure the full implementation of Phase 1;

AND FURTHER THAT the Toronto Waterfront Revitalization Corporation and the Toronto Waterfront Secretariat be so advised .

CARRIED

BACKGROUND

In 2003, Toronto and Region Conservation Authority (TRCA) and Toronto Waterfront Revitalization Corporation entered into a Delivery Agreement to undertake the Mimico Waterfront Linear Park Project. At that time, TRCA was undertaking a coordinated provincial and federal environmental assessment process. A preliminary budget estimate was developed by TRCA based on available information which provided \$1 million for property acquisition, \$4.5 million for construction and another \$1 million for project management, public consultation, approvals and detailed designs. The total project budget of \$6.5 million was set out in the Delivery Agreement. This budget was calculated in 2002 dollars without any contingencies or TWRC project management allocations.

As TRCA moved through the environmental assessment process, refinements were made to the park concept to address issues or requirements of regulatory agencies. Additional park elements resulted in revised park designs which were then incorporated into an updated project budget.

TRCA undertook property appraisals for all necessary private lands required to implement the project. Based on appraisals completed in 2004, TRCA and TWRC agreed to pursue the purchase of all available properties required to implement the project. If all the properties were acquired, the projected expenditure would exceed the original budget of \$1 million. At Authority Meeting #1/05, held on February 25, 2005, TRCA approved Res.#A5/05 to authorize the implementation of the property acquisition strategy, as approved by TWRC. TRCA was successful in acquiring all but four properties from three owners required for the full implementation of the project. As provided in correspondence from John Campbell, (TWRC - dated July 11, 2005) TWRC directed TRCA to purchase all available properties within the project boundaries and to implement a stand alone Phase 1 (central and west sectors) of the project (see Attachment 1).

The original shoreline configuration was modified to reflect a stand alone Phase 1 and to reflect property negotiations with the owners at the foot of Superior Avenue. The new configuration of the shoreline required the inclusion of the storm sewer extension component of the project be undertaken in Phase 1, not Phase 2 as initially determined. This component increased the estimated budget for Phase 1 implementation.

Furthermore, TWRC has suggested that the Crown lands required for the project could be conveyed to TRCA for nominal consideration. To date, Ministry of Natural Resources staff has not received any direction to deal with TRCA's requirement at any amount other than market value. Therefore, TRCA is required to purchase the Crown lands required for the project. An estimated cost of \$400,000 is now included in the updated cost projections for the project.

A prerequisite for the implementation of Phase 2 is the securement of the remaining properties from landowners unwilling to sell at this time. Properties must be acquired by the City of Toronto through the planning process which could take many years. A budget to implement the Phase 2 components of the project is not provided at this time. TWRC committed to revisit the possibility of additional funding in future discussions relating to the 10 Year Business Plan to complete Phase 2 of the project.

RATIONALE

TRCA has all approvals necessary to implement Phase 1 of the project. Initiating construction in July, 2006 will ensure regulatory compliance with all approval agencies, including Fisheries and Oceans Canada. TRCA has developed an implementation schedule which includes commitments to receive continuous supplies of construction materials during the preparation of the land base. Any delays in the construction start-up could jeopardize the availability and receipt of these required materials.

TRCA has a signed Delivery Agreement for \$6.5 million, dated November 2003. Construction activities would be initiated this July and continue until the end of the fiscal year (March 31, 2007). TRCA would not incur any expenses beyond the approved budget. TRCA staff have discussed risks associated with proceeding with the project in July 2006 and based on timelines presented by the TWRC for changes to the funding Contribution Agreement and subsequent changes to the TRCA Delivery Agreement, it is staff's assessment that the risk is minimal to TRCA.

TRCA and TWRC have continued to promote the current implementation schedule for the project to the general public and the funding partners. The proposed start date of July 3, 2006 would maintain current public support for the project and the support of TWRC and its partners. The existing implementation schedule would meet expectations of the community, TWRC and its funding partners.

FINANCIAL DETAILS

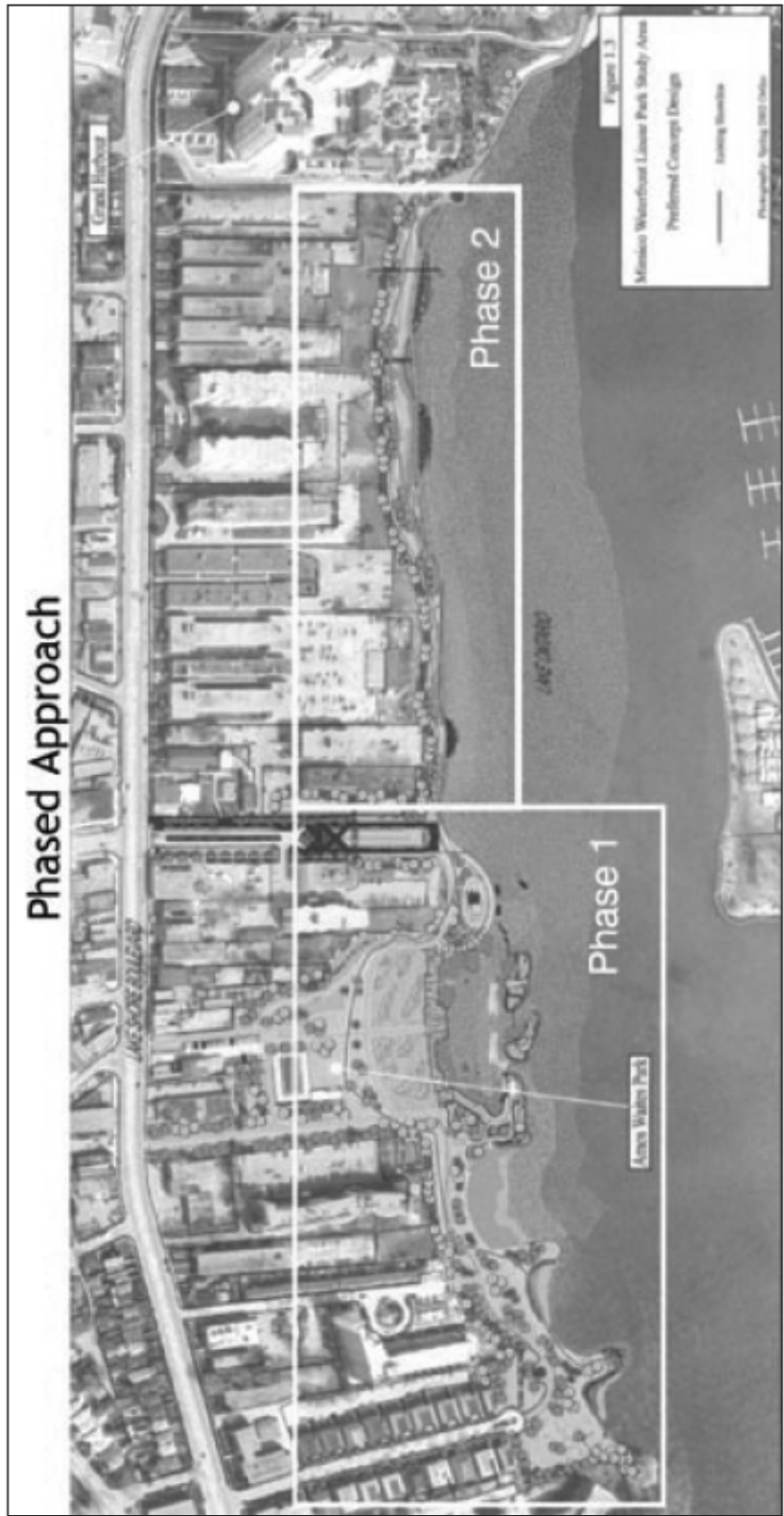
TRCA signed a Delivery Agreement with the Toronto Waterfront Revitalization Corporation for \$6.5 million in November 2003. In December 2005, TRCA initiated discussions with TWRC to develop a revised project budget based on project scope changes and recent TWRC budgeting protocols. In early 2006, TRCA provided TWRC with a revised project budget which included an acquisition strategy requiring an expenditure of \$3.1 million to acquire the necessary properties for project implementation.

Late in 2005 and early 2006, TRCA met with TWRC a number of times regarding the budget shortfall identified following the acquisition of necessary private properties. There was consensus among senior management at both TRCA and TWRC to pursue a revised project budget for Phase 1 of \$10.6 million. At TWRC's Board of Director's meeting held on January 12, 2006, a revised project budget of \$10.6 million for Phase 1 was accepted and TWRC staff was directed to provide this funding through the new 10 year business plan. On January 18, 2006 TRCA provided a letter to Mr. Campbell providing details of the implementation for Phase 1 as follows:

- TRCA would begin construction of Phase 1 in July, 2006 once the fisheries restrictions were lifted.
- TRCA would continue to prepare invoices to TWRC for project expenditures up to \$2.77 million, which is the balance of the original \$6.5 million budget. As per the current Delivery Agreement, TRCA will not commit to incurring any expenses beyond the approved budget.
- TRCA requests that TWRC continue discussions with its funding partners to secure the additional \$4.1 million required to complete Phase 1, as supported by the Board of Director's recommendation.
- TRCA would submit a revised Annual Expenditures and Work Plan reflecting the changes to the budget, schedule and scope of work (submitted May 3, 2006).

TRCA will work with the TWRC to revise the Delivery Agreement in a timely manner as to not jeopardize the completion of Phase 1. Staff have prepared the necessary Authorization for Expenditure reports based on the \$10.6 million dollars budget, reflecting a cash flow that meets our \$6.5 funding limit. Once approved, TRCA can implement the project as set out in the Work Plan provided on May 3, 2006.

Report prepared by: Nancy Gaffney, extension 5313
For Information contact: Nancy Gaffney, extension 5313
Date: May 26, 2006
Attachments: 1



RES.#D19/06 -

BARTLEY SMITH GREENWAY

Waterside Marsh Restoration Initiative. A progress report on the accomplishments and next steps for the Waterside Marsh Restoration Initiative.

Moved by: Gay Cowbourne
Seconded by: Maria Augimeri

THE BOARD RECOMMENDS TO THE AUTHORITY THAT the City of Vaughan be requested to include capital funding for the completion of the Bartley Smith Greenway trail as soon as possible.

**CARRIED
BACKGROUND**

Located at Waterside Drive, north of Rutherford Road and west of Keele Street in the City of Vaughan, this one hectare wetland is currently the focus of the Bartley Smith Greenway Planning and Advisory Committee, and the ongoing efforts to rehabilitate the upper west Don River. The Bartley Smith Greenway (BSG) trail linkages and the regeneration of aquatic habitat projects at this site are key to the ongoing deliverables of the BSG Business and Community Outreach Initiative.

The main goal of this initiative is to improve the function of the existing wetland, while providing nature education and recreational opportunities for the citizens of the City of Vaughan. The main objectives of the Waterside Marsh Restoration Initiative are to:

- Improve the quality of water and aquatic habitats within the upper west Don River through the development of wetlands.
- Establish riparian habitats to provide in-stream cover and control excessive river bank erosion.
- Increase diversity of habitats through planting a variety of native tree and shrub species to attract and sustain local and migratory wildlife.
- Contribute to the linked recreational trail system, within or adjacent to the Don River valley to improve the health and enjoyment of residents and visitors.
- Provide environmental awareness to the local community and offer opportunities for stewardship programs, including nature interpretation outings.

Toronto and Region Conservation Authority (TRCA), in partnership with the City of Vaughan, Great Lakes Sustainable Fund, Ontario Trillium Foundation, First Maple Boy Scouts, Maple Rotary Club, Mackenzie Glen Rate Payers, Vaughan Chamber of Commerce, Richmond Hill Field Naturalists, Toronto Ornithological Club, Mackenzie Glen Public School, Don Watershed Regeneration Council and The Bartley Smith Greenway Advisory Committee have accomplished the following in support of the Waterside Marsh Restoration Initiative:

- Received municipal support from the City of Vaughan council through a public consultation process in 2005.
- Completed detailed drawings and specifications for approval by Fisheries and Oceans Canada and TRCA.
- Submitted a successful proposal to Great Lakes Sustainability Fund for \$50,000 for project implementation.

- Secured overall support from the surrounding community through a public consultation process to assist with implementation.
- Completed 0.5 hectares of excavation and grading of selected areas to enhance habitat and vegetation community diversity.
- Installed a variety of habitat features for wildlife including, twenty two bird nesting boxes, woody debris, basking logs and raptor poles.
- Completion of conceptual drawings for the pedestrian trail alignment and associated infrastructure.

DETAILS OF WORK TO BE DONE

- Create approximately 2 km of recreational trail to the existing BSG trail system managed by the City of Vaughan.
- Install a new pedestrian bridge in July 2006, to link existing east and west communities. On site surveys and drawing preparation are underway, however final fisheries approvals will be required. Financial commitments for the bridge installation have been confirmed by the City of Vaughan.
- Create a 1.8 km natural buffer area between the trail and watercourse.
- Install interpretive signage.
- Host a public planting event to highlight accomplishments and engage local residents.

FINANCIAL DETAILS

This project is funded through the Great Lakes Sustainability Fund (GLSF), City of Vaughan and TRCA through The Conservation Foundation of Greater Toronto.

FUNDING SOURCE	AMOUNT	PRODUCT	STATUS
Great Lakes Sustainability Fund	\$ 50,000	Habitat Creation	Confirmed
TRCA	\$ 30,500	Habitat Creation	Confirmed
City of Vaughan	\$ 65,000	Bridge	Confirmed
City of Vaughan	\$ 225,000	1.8 km of trail	Not Confirmed
TOTAL PROJECT COST	\$ 400,500		

Report prepared by: Greg Sadowski, extension 5668
 For Information contact: Greg Sadowski, extension 5668
 Date: May 26, 2006

RES.#D20/06 - ROUGE WATERSHED TASK FORCE
 Extension of Term. Extension of the Rouge Watershed Task Force mandate for a further period of five months to November 30, 2006.

Moved by: Gay Cowbourne
 Seconded by: Maria Augimeri

THE BOARD RECOMMENDS TO THE AUTHORITY THAT the term of the Rouge Watershed Task Force be extended by five months to November 30, 2006.

CARRIED

BACKGROUND

At Authority Meeting #5/05, held on October 21, 2005, Res.#A242/05 was approved to extend the mandate of the task force to June 2006 in recognition of delays associated with the modelling component of the study and the extra time that had to be taken to address new provincial initiatives including the Greenbelt Plan and the Growth Plan. Complexities in the modelling studies have caused further delays in the ability of the technical team to bring forward the results of this component of the analytical work. To avoid putting the task force members in the position of developing their draft/final plan in a very compressed time frame, and risking inadequate discussion time for key decisions, the task force approved the following resolution at their meeting held on April 12, 2006:

THAT the Rouge Watershed Task Force request that The Toronto and Region Conservation Authority extend the term of the Rouge Watershed Task Force by five months to November 30, 2006 (RES#L71/06)

It is expected that an additional three to four task force meetings (in addition to the ones already scheduled) would be required to complete the work as part of this extension, in addition to separate issue-specific working group and management summit meetings.

Since February 2006, encouraging progress has been made on the modelling aspect of the study, generating a much improved understanding of the groundwater flow system in the watershed and its sensitivities to changes in land cover. The modelling is expected to be completed by the end of June with a full draft watershed plan in September, such that formal public consultation and continued refinement by the task force can take place during the fall. A final plan will be prepared by the end of November 2006.

FINANCIAL DETAILS

The additional task force meetings can be supported within the current approved budget for the watershed planning study (Account #121-06).

Report prepared by: Sonya Meek, extension 5253
For Information contact: Sonya Meek, extension 5253
Date: May 29, 2006

RES.#D21/06 - FINAL REPORT ON STORM AND FLOODING
August 19, 2005. Receipt of final report on the August 19, 2005 storm event.

Moved by: Frank Dale
Seconded by: Elaine Moore

THE BOARD RECOMMENDS TO THE AUTHORITY THAT staff report back with a Flood Warning Work Plan outlining activities and actions related to improvements to the Program .
CARRIED

BACKGROUND

At Watershed Management Advisory Board Meeting #4/05, held on September 23, 2005, staff presented the Preliminary findings related to the August 19, 2005 storm and flooding event. Subsequently, at Authority Meeting #7/05, held on September 30, 2005, Resolution #A208/05 was adopted as follows:

THAT staff be directed to continue to work towards preparation of a final report documenting the storm and flooding impacts which occurred on August 19, 2005;

AND FURTHER THAT staff report back to the Watershed Management Advisory Board upon completion.

Staff have completed formal documentation of this major flooding event, which looked at the conditions leading up to the storm, the meteorological conditions which triggered the storm, a chronology of Toronto and Region Conservation Authority (TRCA) staff actions, analysis of the storm rainfall, impacts from the storm, damages and lessons learned. The text of this communication provides a brief synopsis of the full report which will be available at the meeting.

After one of the driest and warmest summers on record, a cold front passed across the region on the afternoon of Friday, August 19, 2005. The front created severe weather, including tornadoes, along a relatively thin line across most of southern Ontario prior to entering the TRCA region. The collision of the warm air along the front with the cool air at the western end of Lake Ontario created a change in the storm and resulted in a series of extremely intense thunderstorms which moved west to east across the TRCA watersheds, centered over the Highway 401 to Highway 7 corridor.

TRCA staff monitored this weather system throughout the day, issuing a Flood Safety Bulletin at 10:30 a.m. based upon a precipitation forecast of 25 mm. The initiation of severe weather reflected by radar prompted the issuance of a Flood Advisory at 3:15 p.m.. Between 3:15-4:15 p.m., a series of severe thunderstorms passed over the region. The flood warning staff on duty recognized the seriousness of the event and met at G. Ross Lord to discuss their actions and to begin to collect data on precipitation amounts and flows in the reservoirs, rivers and streams. Operations at Claireville and G.Ross Lord dams continued throughout the evening. A Flood Warning was issued at 8:30 p.m. as the extent of flooding became more apparent. Staff continued to monitor conditions and operate the flood control reservoirs throughout the remainder of the evening and overnight. While reservoir operations continued for several more days, the Flood Warning was cancelled at 10 a.m. on Saturday, August 20, 2005.

Rainfall amounts of 100 to 150 mm were generally recorded between 3:15-4:15 p.m. exceeding any previously recorded in TRCA's jurisdiction for a one hour storm. Widespread urban flooding occurred which consisted of flooded roads and interchanges, roadway underpasses and basement flooding. Traffic within the north portion of Toronto and in southern York Region was in chaos as most major street interchanges were flooded to depths in excess of one metre. Many motorists were stranded after driving into flooded areas. Finch Avenue at the Black Creek was washed away after the upstream end of the culvert collapsed and the Black Creek tributary of the Humber River overtopped the roadway. The West Don River feeding into the G. Ross Lord Reservoir experienced a large amount of run-off from the storms and quickly flooded, overtopping both Dufferin Street and Steeles Avenue. Throughout the evening and overnight, TRCA staff operated the dams, checked stream gauges, visited flood vulnerable sites and communicated with municipal staff. Operations at G. Ross Lord controlled flows downstream along the west branch of the stream to minimize flooding through sites such as Hoggs Hollow at Yonge Street and York Mills Road. While flooding did occur along the main branch of the Don River at Bayview Avenue at several locations, including the Brick Works and at sections on the Don Valley Parkway, flood damage directly related to river overflow was limited with no significant residential or commercial building flooding reported.

With an event of this magnitude, documentation entails cooperation from a number of agencies, including Environment Canada, the insurance industry and municipalities. Cooperation from these groups was sought and staff have prepared a document which includes a review of actions by TRCA staff, flooding damages, an assessment of the rainfall, the extent of flooding that occurred, estimated municipal direct damage costs and insurance costs. The direct municipal costs at present are estimated to be in the \$10-11 million range and consist principally of costs related to repairing road damages and repairs related to erosion to municipal infrastructure, such as sewers. A comprehensive assessment of insurance claims is still being compiled. To date, claim amounts are anticipated to be in the range of \$350 million, slightly less than initially thought. Intangible damages such as lost wages, reduced business and increased travel times resulting in reduced productivity have not been looked at to date. Similarly, flood damages not covered by insurance have not been examined. The costs of these damages can and often are much higher than the tangible ones, and may never be fully documented.

While no loss of life occurred and our operations and flood control infrastructure worked well in minimizing flood damages, a review of operations and communications revealed opportunities to improve the TRCA Flood Forecasting and Warning Program and TRCA's abilities to respond more effectively to future events. To date, the review has indicated that the day-to-day operational procedure referred to as the Daily Planning Cycle (DPC) worked well and allowed for the recognition of a potential event and the issuance of an early public safety message. The communication of this message to the press did not work as well, and actions have been taken to resolve this.

DETAILS OF WORK TO BE DONE

Staff will report back to the Watershed Management Advisory Board with a Flood Warning Work Plan outlining activities and actions related to improvements to the program.

As mentioned above, a review of operations and communications revealed opportunities to improve the TRCA Flood Forecasting and Warning Program and TRCA's abilities to respond more effectively to future events. The need to work more closely with the municipal emergency planning and response departments in TRCA's jurisdiction in understanding roles and responsibilities and training for future events was clearly defined as an area for additional work. Staff are involved in ongoing works with municipal departments in Toronto to improve our abilities to coordinate a more effective response and improve our understanding of where and how we can work more closely together, both from a response and an emergency planning perspective. A workshop held with local and regional municipalities in February 2006 provided a first step. Internal communications, training and the need to address the need for more staff capabilities in larger events was also recognized as a future need.

The extraordinary nature of this event in terms of the rainfall intensities may be indicative of future climate trends related to climate change. TRCA's ability to operate a Flood Forecasting and Warning Program that is adaptive and effective at protecting against flood risk will require a commitment to have adequately trained staff and up-to-date technological resources. The documentation of such flood events and a review of operations will continue to be a necessary component of ensuring this.

Report prepared by: Donald Haley, extension 5226
For Information contact: Donald Haley, extension 5226
Date: June 5, 2006
Attachments: Final report to be provided at meeting

SECTION IV - ITEMS FOR THE INFORMATION OF THE BOARD

RES.#D22/06 - DON WATERSHED REGENERATION COUNCIL
Minutes of Meetings #9/05, held on October 20, 2005; #10/05 held on November 17, 2005; #1/06, held on January 19, 2006; #2/06, held on February 16, 2006; #3/06, held on March 16, 2006 and #4/06, held on April 20, 2006.. The Minutes of the Don Watershed Regeneration Council Meetings #9/05, held on October 20, 2005; #10/05 held on November 17, 2005; #1/06, held on January 19, 2006; #2/06, held on February 16, 2006; #3/06, held on March 16, 2006 and #4/06, held on April 20, 2006 are provided for information.

Moved by: Frank Dale
Seconded by: Elaine Moore

IT IS RECOMMENDED THAT the Minutes of the Don Watershed Regeneration Council Meetings #9/05, held on October 20, 2005; #10/05 held on November 17, 2005; #1/06, held on January 19, 2006; #2/06, held on February 16, 2006; #3/06, held on March 16, 2006 and #4/06, held on April 20, 2006, be received.

CARRIED

BACKGROUND

Copies of the minutes of the Don Watershed Regeneration Council are forwarded to the Authority through the Watershed Management Advisory Board. These minutes constitute the formal record of the work of the Don Watershed Regeneration Council, and serve to keep the Authority members informed of the steps being undertaken to implement the Don Watershed Task Force's report "Forty Steps to a New Don" and to regenerate the watershed.

Report prepared by: Michelle Vanderwel, extension 5280
For Information contact: Michelle Vanderwel, extension 5280
Date: May 26, 2006

RES.#D23/06 - DUFFINS CARRUTHERS WATERSHED RESOURCE GROUP
Minutes of Meeting #1/06, February 22, 2006. The Minutes of Duffins Carruthers Watershed Resource Group Meeting #1/06, held on February 22, 2006, are provided for information.

Moved by: Frank Dale
Seconded by: Elaine Moore

IT IS RECOMMENDED THAT the Minutes of Duffins Carruthers Watershed Resource Group meeting #1/06, held on February 22, 2006, be received.

CARRIED

BACKGROUND

Copies of the minutes of the Duffins Carruthers Watershed Resource Group are forwarded to the Authority through the Watershed Management Advisory Board. These minutes constitute the formal record of the work of the Duffins Carruthers Watershed Resource Group, and serve to keep the Authority members informed of the steps being undertaken to implement A Watershed Plan for Duffins Creek and Carruthers Creek.

Report prepared by: Joanna Parsons, extension 5575
For Information contact: Gary Bowen, extension 5385
Date: June 07, 2006

RES.#D24/06 - ETOBICOKE-MIMICO WATERSHEDS COALITION
Minutes of Meeting #5/05, held on November 24, 2005.. The Minutes of Etobicoke-Mimico Watersheds Coalition Meeting #5/05, held on November 24, 2005, are provided for information.

Moved by: Frank Dale
Seconded by: Elaine Moore

IT IS RECOMMENDED THAT the Minutes of Etobicoke -Mimico Watersheds Coalition meeting #5/05, held on November 24, 2005, be received.

CARRIED

BACKGROUND

The Terms of Reference for the Etobicoke-Mimico Watersheds Coalition, dated May 2002, and adopted by the Authority at Meeting #5/02, held on May 24, 2002 by Resolution #A124/02, includes the following provision:

Section 3.5 - Reporting Relationship

The Etobicoke-Mimico Watersheds Coalition is considered a subcommittee of the Watershed Management Advisory Board. The Watersheds Coalition Chair will report, at least, on a semi-annual basis on projects and progress.

**Report prepared by: Joanna Parsons, extension 5575
For Information contact: Chandra Sharma, extension 5237
Date: June 07, 2006**

RES.#D25/06 - HUMBER WATERSHED ALLIANCE
Minutes #2/06 held on April 18, 2006. The Minutes of the Humber Watershed Alliance meeting #2/06, held on April 18, 2006, are provided for information.

Moved by: Frank Dale
Seconded by: Elaine Moore

IT IS RECOMMENDED THAT the Minutes of the Humber Watershed Alliance meeting #2/06, held on April 18, 2006, as appended, be received.

CARRIED

BACKGROUND

The Terms of Reference for the Humber Watershed Alliance, dated December 2003, and adopted by the Authority at meeting #10/03, held on January 9, 2004, by resolution #A289/03, includes the following provision:

3.9 Reporting Relationship

The Humber Watershed Alliance is considered a subcommittee of the Watershed Management Advisory Board. The Watershed Chair will report, at least, on a semi-annual basis on projects and progress.

**Report prepared by: Lia Lappano, extension 5292
For Information contact: Gary Wilkins, extension 5211
Date: May 18, 2006**

RES.#D26/06 -

ROUGE PARK ALLIANCE

Minutes of Meeting #2/06, held on February 22, 2006 and Minutes of Meeting #3/06, held on March 31, 2006. The Minutes of Meeting #2/06, held on February 22, 2006 and Minutes of Meeting #3/06, held on March 31, 2006, are provided for information.

Moved by: Frank Dale
Seconded by: Elaine Moore

IT IS RECOMMENDED THAT the Minutes of the Rouge Park Alliance Meeting #2/06, held on February 22, 2006 and Minutes of Meeting #3/06, held on March 31, 2006, be received.

CARRIED

BACKGROUND

Copies of the minutes of the Rouge Park Alliance are provided to the Toronto and Region Conservation Authority through the Chair of the Authority, who is a member of the Rouge Park Alliance, and forwarded to the Watershed Management Advisory Board for information.

**Report prepared by: Andrea Fennell, extension 5254
For Information contact: Adele Freeman, extension 5238
Date: May 16, 2006**

RES.#D27/06 -

ROUGE WATERSHED TASK FORCE MINUTES

Minutes of Meeting #5/05, held on September 15, 2005; #6/05, held on November 10, 2005; #1/06, held on January 11, 2006; #2/06, held on February 16, 2006; #3/06, held on March 23, 2006 and #4/06, held on April 12, 2006. The Minutes of Meeting #5/05, held on September 15, 2005; #6/05, held on November 10, 2005; #1/06, held on January 11, 2006; #2/06, held on February 16, 2006; #3/06, held on March 23, 2006 and #4/06, held on April 12, 2006 are provided for information.

Moved by: Frank Dale
Seconded by: Elaine Moore

IT IS RECOMMENDED THAT the Minutes of the Rouge Watershed Task Force Meeting #5/05, held on September 15, 2005; #6/05, held on November 10, 2005; #1/06, held on January 11, 2006; #2/06, held on February 16, 2006; #3/06, held on March 23, 2006 and #4/06, held on April 12, 2006, be received.

CARRIED

BACKGROUND

Copies of the minutes of the Rouge Watershed Task Force are forwarded to the Authority through the Watershed Management Advisory Board. These minutes constitute the formal record of the work of the Rouge Watershed Task Force and serve to keep the Authority members informed of the steps being undertaken to develop the *Rouge Watershed Plan*.

Report prepared by: Sylvia Waters, extension 5330
For Information contact: Sylvia Waters, extension 5330
Date: May 29, 2006

TERMINATION

ON MOTION, the meeting terminated at 10:35 a.m., on Friday, June 16, 2006.

Nancy Stewart
Vice Chair

Brian Denney
Secretary-Treasurer

/ks