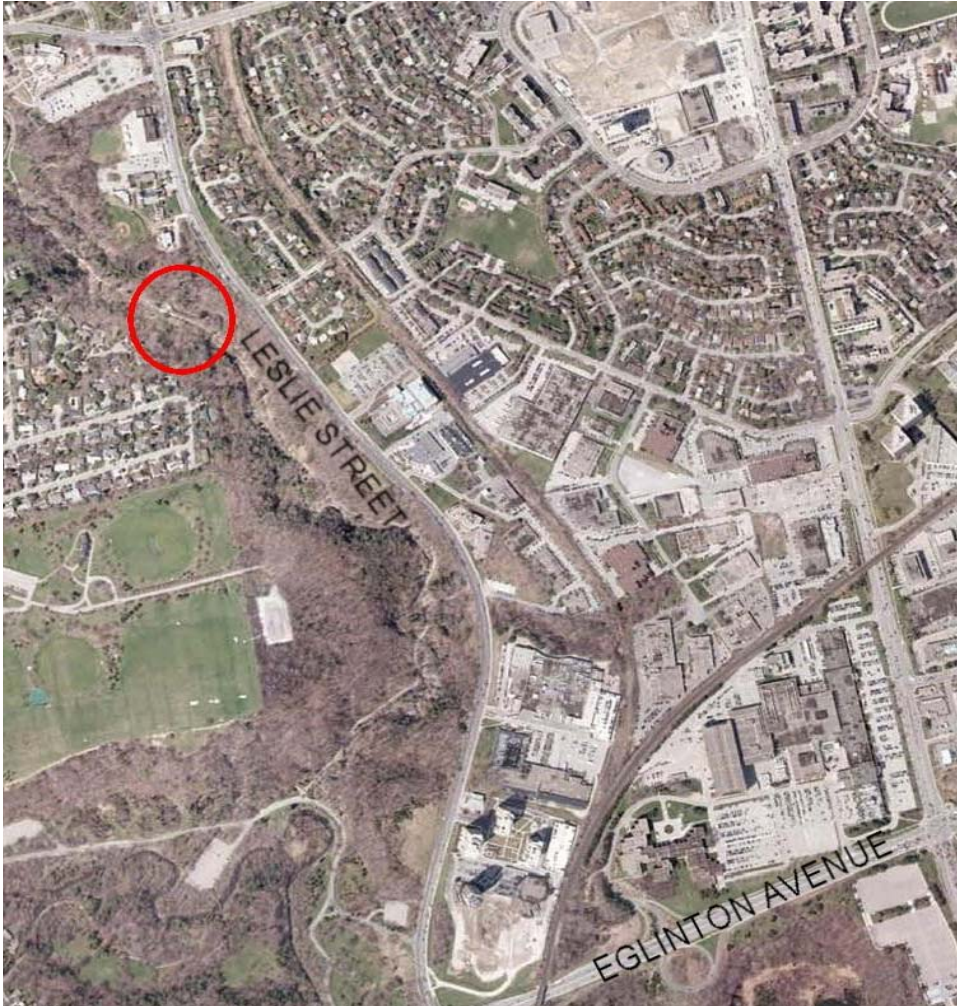


# NOTICE OF CONSTRUCTION

Please be advised that the Toronto and Region Conservation Authority (TRCA), on behalf of the City of Toronto, is preparing to undertake the second phase of emergency works to protect public safety and municipal infrastructure in Wilket Creek Park against the hazards of stream erosion.

Phase II of the emergency works involves realignment of the existing trail away from the watercourse, installation of two new bridge crossings, and modifications to the watercourse, including channel widening to reduce the risk to the sanitary sewer. The general location of the work site is shown in **Figure 1**.



**Figure 1.** Approximate location of works (circled in red).

The emergency works are scheduled to commence the week of July 18<sup>th</sup>, 2011 and are anticipated to be completed by November 1, 2011, weather permitting.

To protect public safety, intermittent trail closures for the duration of construction are anticipated. Signage will be installed at all entrances to the park to advise the public of potential interruptions in trail access.

Information on this project can be found on the TRCA website at:

<http://www.trca.on.ca/protect/environmental-assessment-projects/wilket-creek-rehabilitation-project.dot>

or by contacting:

Patricia Newland, Project Manager • Environmental Engineering Projects • Toronto and Region Conservation Authority • Phone: (416) 392-9690 • Email: [pnewland@trca.on.ca](mailto:pnewland@trca.on.ca)