

NOTICE OF CONSTRUCTION

Please be advised that the Toronto and Region Conservation Authority (TRCA), on behalf of the City of Toronto, is preparing to undertake the first phase of emergency works to protect public safety and municipal infrastructure in Wilket Creek Park against the hazards of stream erosion.

Phase I of the emergency works involves encasing an existing sanitary sewer in concrete prior to stabilizing and restoring the watercourse, which is scheduled to be done later in the year as Phase II of the emergency works. The general location of the work site is shown in **Figure 1**.

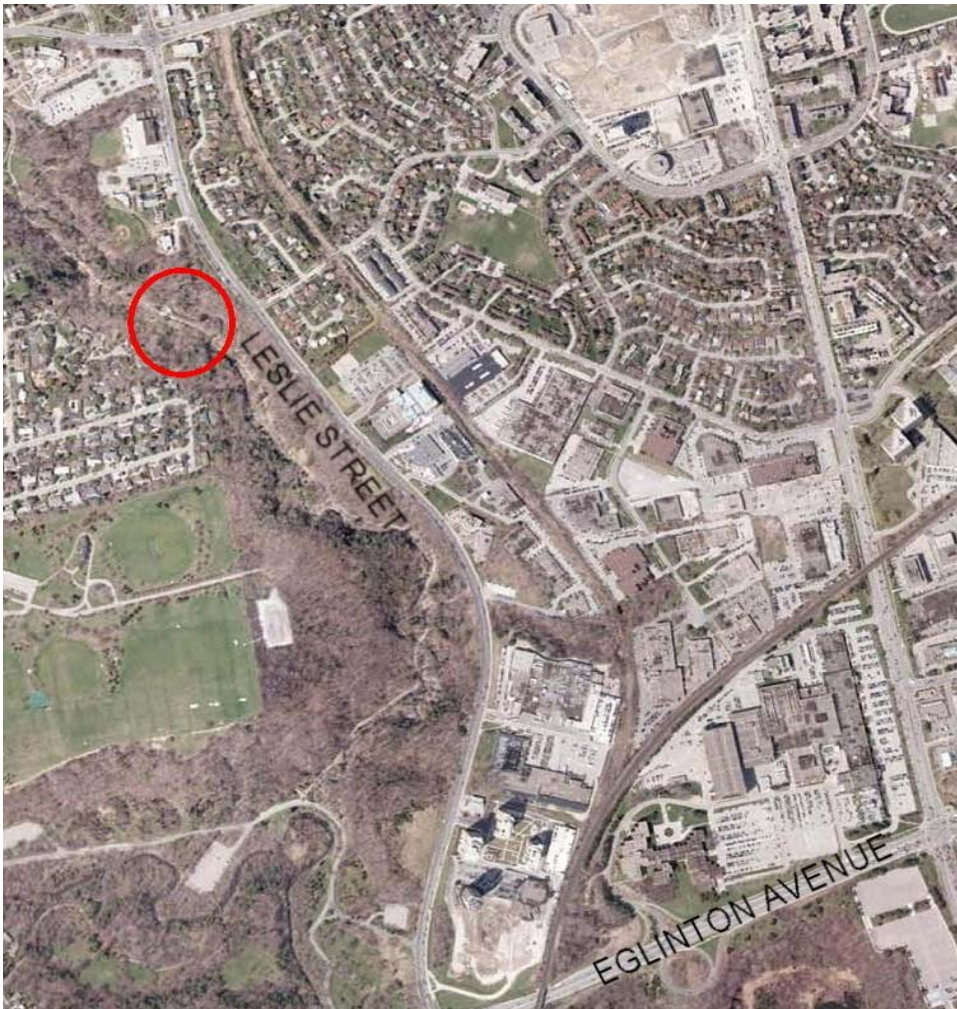


Figure 1. Approximate location of sanitary sewer encasement work (circled in red).

The encasement work is tentatively scheduled to commence the week of April 26th, 2011 and is anticipated to be completed by May 16th, 2011.

To protect public safety, the section of trail within the limits of construction will be closed for the duration of the work; signage will be installed at both the north and south limits of the trail to advise the public of this interruption.

For more information on the project please contact:

Moranne McDonnell, Senior Manager • Environmental Engineering Projects • Toronto and Region Conservation Authority • Phone: (416) 392-9725 • Email: mmcdonnell@trca.on.ca



Member of Conservation Ontario