

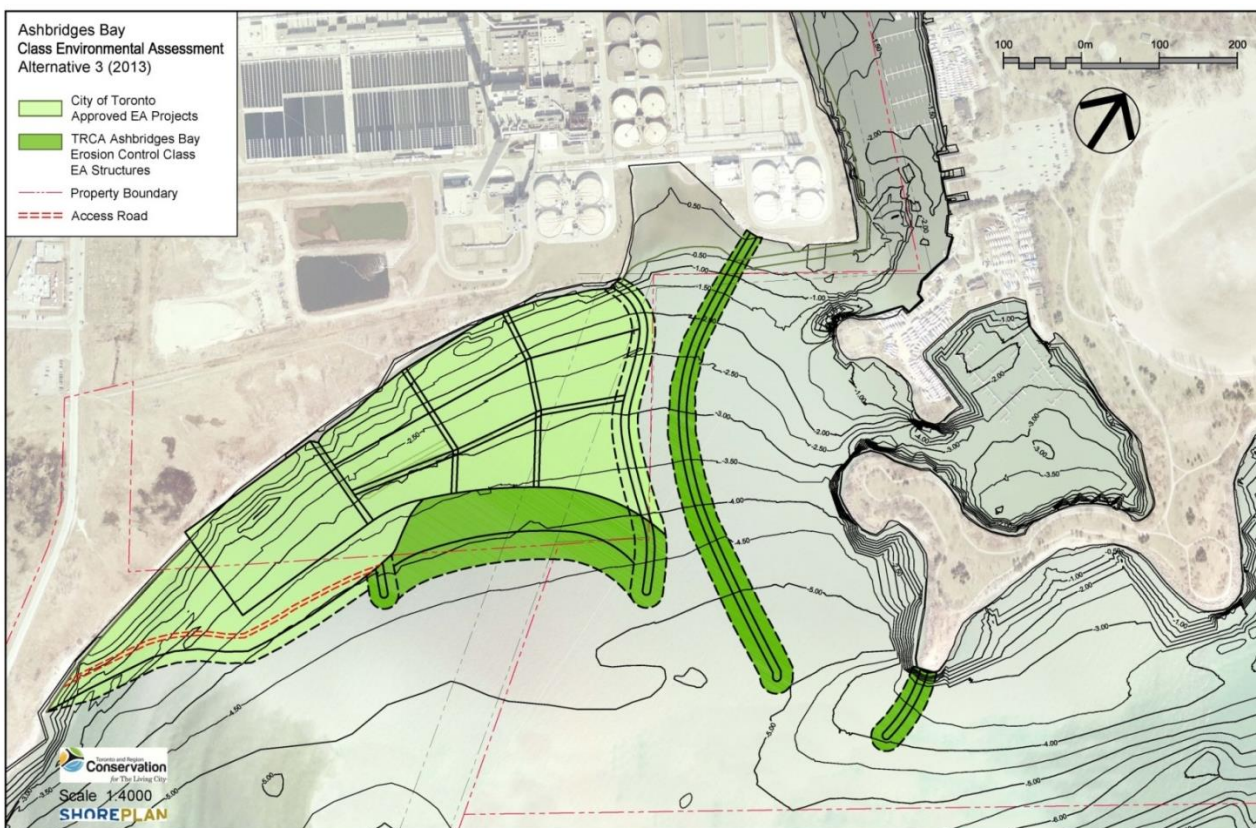
**Ashbridges Bay Erosion and Sediment Control Project
Class Environmental Assessment**

**Public Information Centre #2 – February 6, 2014
COMMENT FORM**

Toronto and Region Conservation Authority and the City of Toronto are undertaking a Class Environmental Assessment study to identify a preferred solution that will mitigate erosion and sediment deposition at the harbour entrance of Coatsworth Cut in order to ensure safe navigation, while considering the various approved facilities, planning initiatives, and current uses in the study area.

The City is interested in your comments and suggestions about this project and the recommended preferred alternative. Please take a few minutes to complete this comment sheet. All comments will be considered.

Recommended Preferred Alternative



Alternative 3 (as shown above) has been recommended as the preferred alternative. A description of the preferred alternative is provided in the Display Board package.

Alternative 3 has been recommended as the preferred alternative for the following reasons:

- It has the least impact to water quality in the recreational areas, with a potential positive impact on *E.coli* levels in the recreational boating areas;
- It provides the best integration with current Ashbridges Bay Wastewater Treatment Plant operations (sea wall gates) and flexibility for future approved City of Toronto infrastructure; and
- It provides decades of safe navigation without on-going maintenance (dredging).

Please continue on the back of this page

Questions:

Do you agree with the recommended preferred alternative as presented?

Yes No

Please explain

Do you have additional comments regarding the evaluation of alternatives, the recommended preferred alternative and/or any other project related matter?

Please leave your completed feedback form at the sign-in desk OR, if you'd like more time to write your comments, please send them no later than **Thursday February 20, 2014** to:

ATTN: Lisa Turnbull
Toronto and Region Conservation Authority
Restoration Services
5 Shoreham Drive
Downsview, ON, M3N 1S4
Facsimile: (416) 667-6277
e-mail: lturnbull@trca.on.ca

Postage paid envelopes are available at the sign-in desk. Copies of the feedback form and display boards will be available electronically on Friday February 7, 2014 at:
www.trca.on.ca/ashbridgesbayproject_ea

Information will be collected in accordance with the Freedom of Information and Protection of Privacy Act. With the exception of personal information, all comments will become part of the public record.